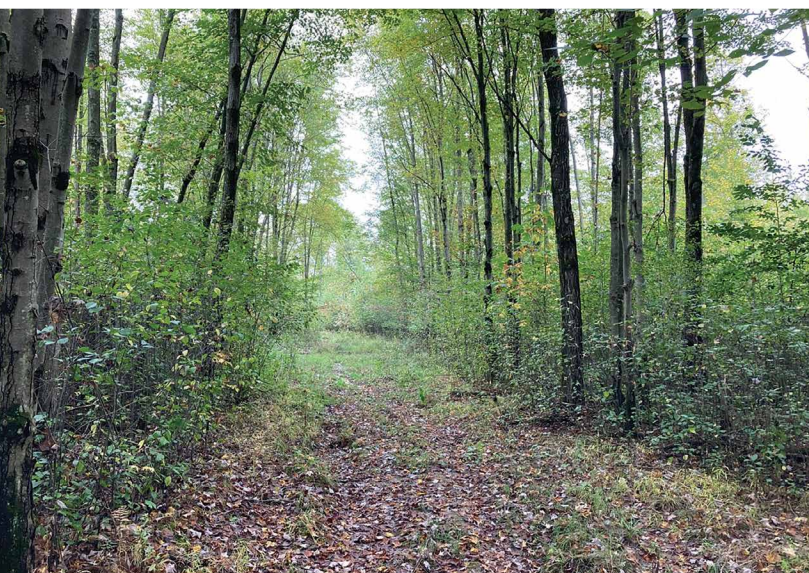


ABSOLUTE AUCTION

SATURDAY, NOVEMBER 2, 2024, 11:00 AM



LAND



LIVE AUCTION WITH ONLINE BIDDING

AUCTION HIGHLIGHTS

- Mostly Wooded
- Abundance Of Wildlife & Nature
- Coitsville Twp.
- Mahoning Co.
- Close To PA Line
- Mineral Rights Transfer
- Sells As A Unit

REAL ESTATE

48.3 acres total with 792' of frontage, mostly wooded, open in front with abundance of wildlife. (2) storage containers to stay with. Land lays real nice. Walk the land at your convenience. You'll like this property. All mineral rights transfer.

TERMS ON REAL ESTATE

10% down auction day, balance due at closing. A 10% buyer's premium will be added to the highest bid to establish the purchase price. Any desired inspections must be made prior to bidding. All information contained herein was derived from sources believed to be correct. Information is believed to be accurate but not guaranteed.

48.3 ACRES OF LAND

5950 MCGUFFEY RD.,
LOWELLVILLE, OH 44436

www.kikoauctions.com | 800.533.5456

Information is believed to be accurate but not guaranteed.
KIKO Auctioneers



MEMBER REALTOR
MLS



Scan for auction details, including directions.

Absolute Auction.
All sells to the highest bidders on location.



RANDALL L. KIKO
AUCTIONEER/REALTOR
330.831.0174
randallkiko@kikocompany.com



Information is believed to be accurate but not guaranteed.
KIKO Auctioneers

